

Think safety think Steelmate



©Steelmate Co., Ltd. All rights reserved.
The trademark, patent and copyright are owned by Steelmate Co., Ltd.
The right to change the design and specifications reserved.

STEELMATE CO., LTD.

Steelmate Industrial Park, Heping Street, Dongfu Road, Dongfeng Town,
Zhongshan City, Guangdong, P.R. China 528425



Driving Video Recorder
ONE-S Safety Driving System

Manual



Please scan the
QR code for the
additional modules.

Contents

User Manual

Disclaimer	01	2.13 File Playback	08
Important Instructions	01	2.14 System settings	09
1. Introduction	01	3. Additional functions.....	11
1.1 Brief Look	01	3.1 Optional part - wireless Receiver	11
1.2 interface details	02	3.2 Optional Module - Tire Pressure	11
1.3 Specifications	03	3.3 Optional Module - Parking Mode	12
2. Basic Operations	04	3.4 Optional Module - Blind Spot Detection ----	13
2.1 Storage	04	3.5 Optional Module - Front Collision Warning-	14
2.2 Recorder ON/OFF	04	3.6 Optional Module –Front Radar Warning ---	15
2.3 Hardware Reset	05	3.7 Optional Module –Rear Radar Warning ----	15
2.4 TF Card Self-Checking	05	3.8 Optional Module –Seat Belt Reminder-----	16
2.5 Loop Recording	06	3.9 Optional Module –Air Monitoring	16
2.6 Emergency Recording	06	4. Fault information reminder area for additional	
2.7 Photo taking	07	functions.....	17
2.8 Auto brightness	07	5. Includes	17
2.9 Intelligent sleeping mode	07	6. Wiring diagram for front camera and rear	
2.10 Camera switching	07	camera	18
2.11 Recording while Parked	07	7. Troubleshooting	19
2.12 Time lapse while parked	07		

User Manual

Disclaimer

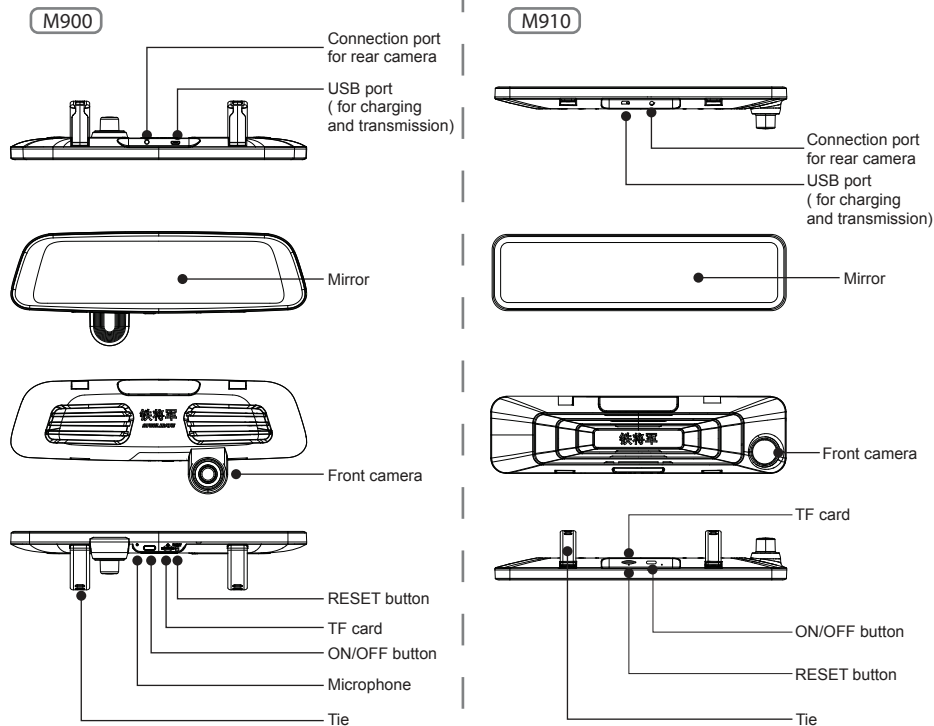
- Steelmate reserves the right to change details and specifications in this manual without notice.
- Steelmate does not warranty this manual is error-free.
- Steelmate assumes no liability for damage incurred directly or indirectly from errors, omission, or discrepancies between the recorder and the manual.
- This camera is for personal use not for commercial purpose.
- Please read this manual carefully before using the camera.

Important notice

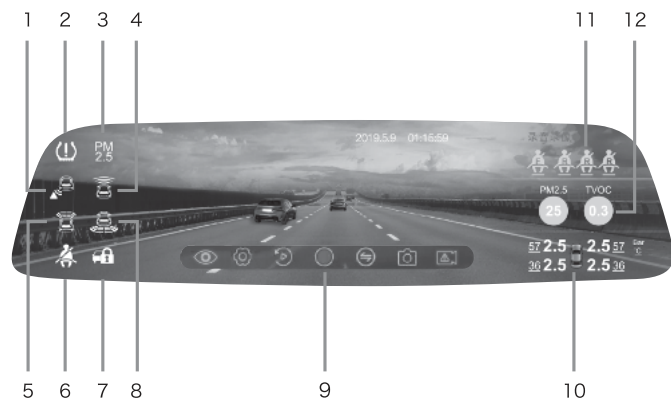
1. This recorder is for vehicle with 12V DC only.
2. Do not touch the lens with your fingers. Oils from your fingers may be left on the lens, resulting in video or photographic unclear. Periodically clean the lens.
3. Make sure the view will not be blocked when determining the installation location of camera.
4. The image quality may be affected by intensity of light.

1. Introduction

1.1 Brief look



1.2 Interface details



1	Icon for Blind Spot Detection function	5	Icon for Front Radar Warning function	9	Function button for DVR function
2	Icon for Tire Pressure Monitoring function	6	Icon for Seat Belt Reminder function	10	Information for Tire Pressure Monitoring
3	Icon for Air Monitoring function	7	Icon for Parking mode function	11	Information for Seat belt reminder
4	Icon for Front Collision Warning function	8	Icon for Rear Radar Warning function	12	Information for Air Monitoring

Remarks:

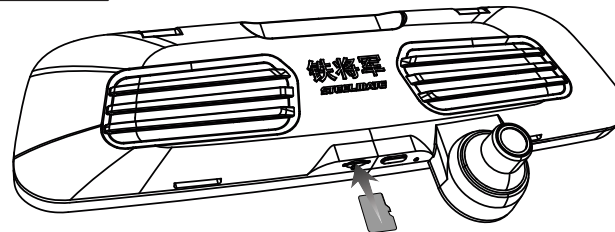
- For item 1 –8, if the functions are installed, the corresponding icons will turn yellow when the system powered ON every time.
- For item 10-11, if the corresponding functions are installed, the detail information will be shown on the screen.

1.3 Specifications

Camera sensor type	Front camera: CMOS
	Rear camera: CMOS
Maximum effective pixels	Front camera: 1920 (H) x 1080 (V)
	Rear camera: 1920 (H) x 1080 (V)
Effective field angle	Front camera: 130°± 2°
	Rear camera: 126°± 2°
Frames per second	30fps
	25fps
IP rate	Rear camera: IP67
Working voltage	9 ~16V±0.5V
Average working current	<1500mA
Maximum working current	≤2500mA
Working temperature	-20°C~70°C
Storage temperature	-30°C~85°C
Video signal stabilization time	≤1s
Starting recording time	<6s
Language	Chinese, English
Outage delay	B+/ACC 2s
Video Pixel	1920 x 1080P, 1280 x 720P
Video compression mode	Video: H.264
	Photo: JPEG
Repeat recording settings	1 min / 3 min/ 5 min
MMC capacity & level	Capacity: 8 GB ~ 128 GB
	Level: CLASS 10 or above

2. Basic Operations

2.1 Storage



To insert TF card

- Slide memory into card slot with label facing front of recorder
- The card will click into place when fully inserted

To remove TF card

- Place fingernail against edge of memory card and lightly press further into recorder.
- Card will spring out far enough to be removed.

Tips:

- Do not insert/remove TF card when operating the recorder.
- Please format the TF card before use.

Notes: Steelmate does not guarantee the recorder's compatibility with TF card from all manufacturers.

2.2 Recorder ON/OFF

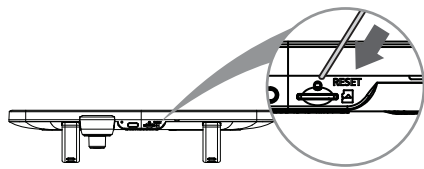
When ACC ON, the recorder will start recording automatically.

When ACC OFF, the recorder will stop recording and save the file automatically, and it will turn off within 15 seconds.

Press the " " button to turn ON the recorder manually.

Hold the " " button for 3 seconds to turn OFF the recorder manually.

2.3 Hardware Reset



Press "Reset"

- Occasionally, hardware needed to restart when the recorder stops recording; or appears to be "frozen" or "locked-up".
- Press the RESET button to perform a hardware reset.

2.4 TF Card Self-Checking



Message Pop-up	Means
No TF Card	No memory card inserted
Invalid image card	Memory card damaged

Notes:

- The recorder checks the TF card when it is powered ON every time;
- The recorder will start recording automatically if the memory card is valid;
- The system will upgrade automatically if there is upgraded software saved in the memory card.

2.5 Loop Recording

When vehicle ACC is ON, the recorder will start recording automatically if Auto Recording mode is ON. The frameless recording may be divided into several video clips (default is 1 min /video clips). The length of video clips can be changed in Setup Menu (Please refer to page 09).


When vehicle ACC is OFF, the recorder will stop recording and save files automatically;

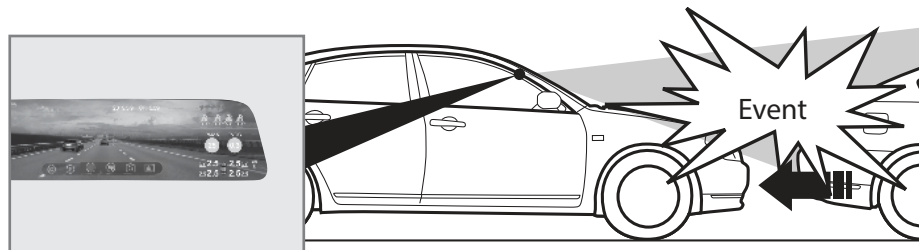
Notes:

The files can be founded in the File Playback (Please refer to page 08).

2.6 Emergency Recording

By default, if an event happens, such as sudden impact, high-speed driving, an overdone turn or an accident crash, the G sensor will trigger the recorder to start an Emergency Recording automatically .


Or touch the screen, then press “  “ icon to start the Emergency Recording manually.



Notes:

- When the memory is full, The Emergency Video will be overwritten by the Emergency video.
- The files can be founded in the File Playback (Please refer to page 08).

2.7 Photo taking

Touch the screen, then press “” icon to take the photo.

Note: The JPG file can be founded in the File Playback (Please refer to page 08).

2.8 Auto brightness

The recorder can adjust the brightness based on the light conditions.

2.9 Intelligent sleeping mode

When ACC OFF, the recorder will enter the intelligent sleeping mode.

2.10 Camera switching

Touch the screen, then press “” icon to switch the front or rear camera .

The switch sequence as follows:

Front camera → Rear camera → Front and rear camera displayed in one screen

2.11 Recording while Parked

In setting page, select Parking Mode and confirm it is not turned OFF. When the vehicle is parked, if an event happens, such as sudden impact or accident crash, the recorder will turn on and recoding automatically. The video from the moment will save in 1 minute. Finally, the recorder will enter the intelligent sleeping mode after the recording finished.


Notes: The screen is always closed during the recording unless press “” button by manual.

2.12 Time lapse while parked

In setting page, select Time Lapse and confirm it is not turned OFF. When the vehicle is parked, the video will start to record an video for 8/12/24 hours with 1 fps.

Notes: The screen is always closed during the recording unless press “” button by manual.

2.13 File playback

Touch the screen, then press “” icon to select a photo or video for playback:



Photo




Loop recording



Emergency recording

Notes:

- If the recording is in progress, press “” button to stop recording first.
- If there is no operation within 30 seconds, the system will back to the Main interface.